

En-SmartSense

Room Temp - Precision Temperature Sensing for HVAC

The Room Temp is a state-of-the-art temperature sensor designed for accurate and reliable temperature measurement in HVAC duct systems. Engineered with precision and performance in mind, this sensor is an ideal choice for maintaining optimal temperature control and energy efficiency.

TECHNICAL SPECIFICATION

- **Temperature Range**

-40°C to 120°C

- **Accuracy**

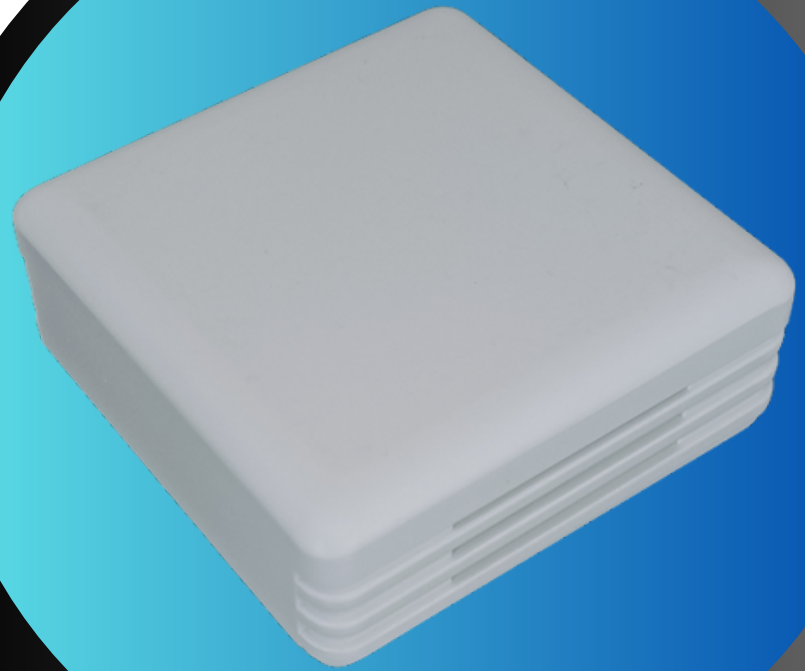
±0.2°C

- **Nominal Resistance**

10,000 ohms at 25°C

- **Response Time**

<1 second



Contact with us:

+91 9941042612

www.emsi.co.in

Key Features

- **NTC Thermistor Technology:** The Room Temp utilizes Negative Temperature Coefficient (NTC) thermistor technology. This ensures high sensitivity and accurate temperature readings.
- **10,000-Ohm Nominal Resistance:** With a nominal resistance of 10,000 ohms at 25°C, this sensor offers precise measurements over a wide temperature range.
- **Duct System Compatibility:** Designed to seamlessly integrate into room systems, this sensor is suitable for a variety of HVAC applications.
- **Fast Response Time:** The NTC thermistor technology provides a rapid response to temperature changes, allowing for quick adjustments in HVAC control systems.
- **Robust Construction:** Built to withstand the demands of room environments, this sensor features durable materials and construction.
- **Easy Installation:** The Room Temp is designed for straightforward installation and can be easily integrated into existing HVAC setups.

Applications

- **HVAC Systems:** Maintain precise temperature control in heating, ventilation, and air conditioning systems.
- **Industrial Processes:** Monitor and control temperature-critical processes for consistent product quality.
- **Energy Management:** Optimize energy usage by accurately tracking temperature variations in rooms.

Benefits

- **Improve HVAC Efficiency:** Precise temperature measurements enable more efficient heating and cooling, resulting in energy savings.
- **Ensure Comfort:** Maintain consistent and comfortable indoor environments by closely monitoring duct temperatures.
- **Reliable Performance:** The RoomTemp offers long-lasting and dependable performance in demanding conditions.

Why Choose Room Temp

Make the smart choice for your temperature sensing needs. The Room Temp is a reliable, accurate, and versatile solution for room temperature monitoring in HVAC and industrial applications. Experience enhanced control and energy efficiency with this advanced temperature sensor

Model

EN_RST_XXYY

E
10K
20K

EN_RST_XXYY

E
PT100
PT1000

WE ARE
HERE

**FOR INQUIRIES AND ORDERS, PLEASE
CONTACT US AT**

**EnSmart Controls
417, Thendral Nagar,
Near Jeeva Shed,
Anthiyur - 638501**

**Ph: +91 9941042612
Web: www.emsi.co.in**

